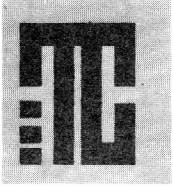


HAPPY NEW YEAR 1970



Terry Topics

ATTENTION
Terry Club gives current homeowners \$50 for each new customer referred to DUNEDIN in Chesapeake.

VOLUME 9 NO. 1

A Neighborhood Service of the Terry Corporation

JANUARY 1970

Red Cross Blood Program Important To All

Everyone is well aware of the fine work that the American Red Cross does at home and abroad. No one can question the dedication with which the Red Cross works to help families in disasters such as Camille. But there is another vital portion of service connected with the Red Cross...the giving of blood.

The importance of the program is that it gives life saving blood to all residents of Tidewater and their dependents, whenever they need it, wherever they need it, at no cost except administrative costs. This is a total coverage region, whereas most of the other regions are on some type of credit system, which means one must donate blood to receive blood.

The Red Cross Blood Program grew out of experience gained during and after World War II when the demand for blood was so great. At that time, the Red Cross contracted with the Department of Defense to supply the total blood needs to all the armed forces. Originally, the program was

financed entirely by the Red Cross, but as more and more was learned about blood, the expenses increased and the Red Cross entered the United Fund. However, over the years, the funds from localities have decreased while the connected expenses have continued to increase. This situation seems to be a self-perpetuating one.

The Tidewater Red Cross Blood Region extends 450 miles north to the south and 150 miles east-to-west. It is obligated to supply the complete blood needs of over 3,000,000 residents no matter where they are hospitalized. In addition, it supplies all fresh blood for heart surgery done by one of the doctors at Medical College of Virginia; all blood for heart surgery at Norfolk General Hospital; at Duke University Hospital; and North Carolina Memorial Hospital. To do this, the Blood Center in Norfolk must have approximately 350 units of blood coming in EACH day, and rarely does a pint of blood remain on the shelves for more than two or three days.

Blood that cannot be used as whole blood is used for fractionation, which means separation and break

down of the blood into its derivatives. These derivatives are just as valuable as whole blood. Fibrinogen is used to control shock. Gamma globulin is given to women in the first trimester of their pregnancy if they have been exposed to measles. Vaccine immune globulin is used to treat infections resulting from smallpox vaccinations, and is the only remedy for these infections. Frozen plasma is used to treat hemophiliacs. There are others but the point is that a pint of blood is never wasted.

The minimum cost for a pint of blood is \$25.00 and it can range as high as \$90.00. Thus, without a total coverage system, Tidewater residents who had not donated blood would have to pay these prices for each pint of blood they receive. Instead, they only pay administrative costs which are relatively low when compared to what they might pay. For each unit of blood a hospital receives from the Red Cross, it must reimburse the Red Cross \$8.00, which is the actual cost for processing, cross-matching, and distributing one pint of blood. The hospitals add to this their own costs

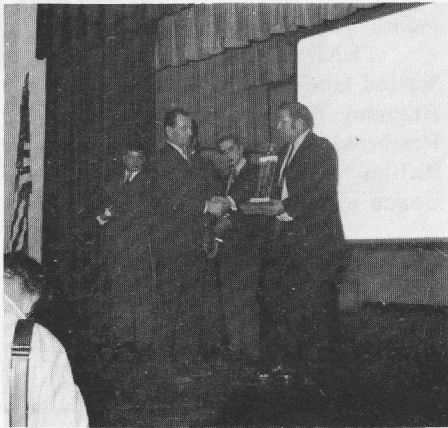
which appears on the final bill rendered to the patient, There is never a charge for Red Cross Blood itself.

Donors must be between 18 and 66 years of age to donate blood and must weigh at least 110 lbs. If they are between 18 and 21, they must have parental consent, unless married. Blood may be given up to five times a year. The Blood Center, located in Norfolk, at 415 York Street, is open on Mondays, Wednesdays and Fridays from 9:00 a.m. to 4:30 p.m.

Three Bloodmobiles are sent out each day and as each chapter meets its quota, the necessary number of pints are collected. The quota is arrived at by averaging usage within the past three years in a county and adding 15% for derivatives. This is not an unreasonable figure and each county has the capability to meet their quota.

The Red Cross helps us, why can't we help ourselves? Give to the Red Cross and help sustain a life.

Champion Panthers Honored At Dinner



Ned Cheely gives trophy to Coach Don Richardson.



David Truxillo receives his award from Coach Richardson. Jack Dibble in background

The Aragona - Pembroke Recreation Council sponsored a buffet dinner at Pembroke Elementary School on December 12 in honor of all area boys who worked so hard this past football season. The honored guests for the evening were the Virginia Beach City Champion Panthers and coaches.

After a delicious meal of fried chicken and ham, the boys and their parents settled down to hear Mike Capshaw of the Norfolk Neptunes give tips and pointers of the game of football. Everyone was given a chance to ask Capshaw a perplexing question concerning football.

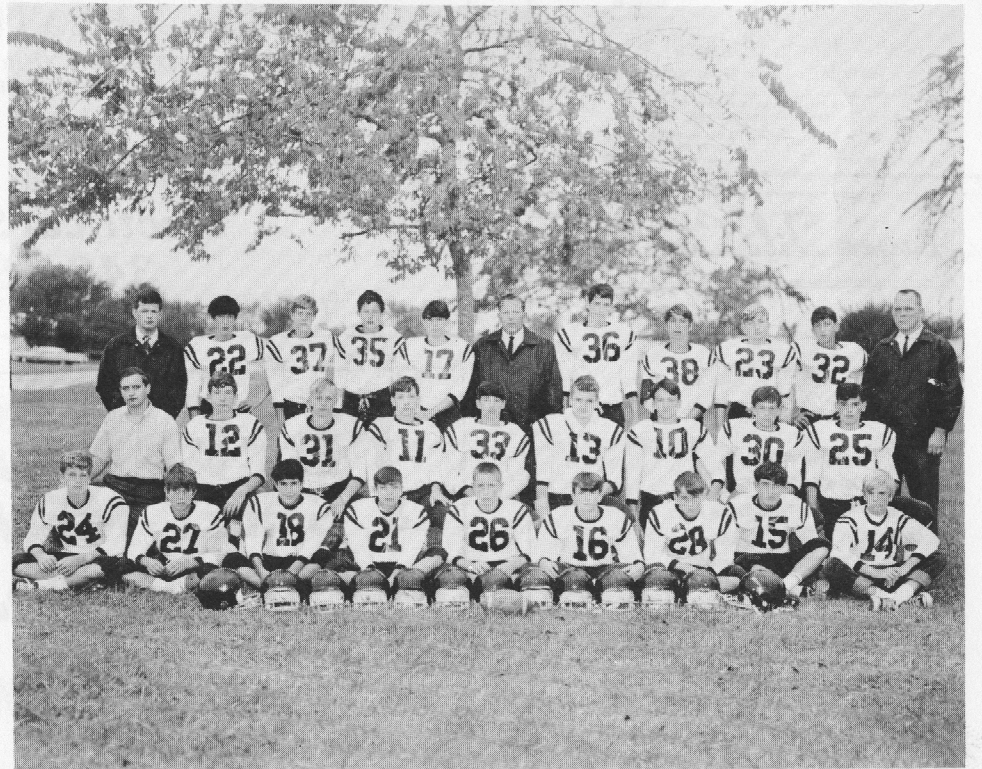
At the conclusion of Capshaw's talk, Coach Don Richardson awarded the long awaited trophies to all the Panthers. Coaches Steve Long, Jack Dibble and Ed Ruka also received trophies for their help this past season.

Ned Cheely, of the Virginia Beach Recreation Department, awarded Coach Richardson a trophy for a productive years' performance.

The boys on the team voted David Truxillo the most valuable player of the year.

Coach Richardson praised the Virginia Beach Recreation Department for the time and effort that is put into keeping Virginia Beach's 69 football teams all straight. He commented further that it is quite a job to keep track of who is playing who, on what day and where the game is taking place.

It was a fine evening for everyone. Don Richardson and his Panthers have much to be proud of.



Bottom Row - left to right - P. O'Rork, B. Bearfoot, M. Blais, B. Amos, P. Jones, S. Harsh, M. Gone, M. Foy.
Second Row - left to right - Coach E. Ruka, W. Allen, J. Miller, A. Graham, D. Truxillo, H. Gaskill, C. Vosler, C. Brickhouse.
Top Row - left to right - Coach S. Long, W. Zoller, L. Johnson, J. Betcher, D. Chapman, Coach D. Richardson, R. Phelps, S. Williams, P. Karsh, A. Stacy, Coach J. Dibble.

Block Mothers Need Support

The Tidewater Council of Block Mothers, organized in 1967, has been doing an exceptional job accomplishing the goals and standards set by the Articles of Incorporation.

In part, the Articles state that it is the purpose of Block Mothers to operate without profit and to promote good will among the general public; to seek sounder relations with local courts, Police Departments and schools; to provide safe and convenient places for all children in an emergency situation; to aid in educating parents and children as to the menace of child molesters and to familiarize the public as to the willingness of their local police departments to cooperate with parents when dealing with such dangerous situations.

Drug Abuse has been selected for the educational project for this year,

by request of the Police Department.

Resolutions have been drawn up by the Council requesting Virginia legislators to study and revise the laws pertaining to child molesting. The laws in effect today are inadequate compared to the growing problems.

Mrs. Sally Hyman, President of the Tidewater Council of Block Mothers, asks the support of every Block Mother in the area. Mrs. Hyman urges all Mothers to attend the Council meetings and to see what is being accomplished. The business of the Block Mothers Organization is handled by the Board which consists of mothers who are vitally interested in child protection. But the Board needs all Block Mothers help in seeing that the function and purpose of the Organization continue.

Please give your support and interest to this necessary organization.

January White Sales Offer Bargins

By D. Ingrid Tifenburg

Every January many stores have their annual white sales--sales on household linens. This is an excellent time to purchase your linens to add to your present stock or to replace any worn linens. Since linens at this time are considerably marked down in price it is your best opportunity to acquire high quality linens at a great savings to you.

When you go out shopping there are a few points to consider about each purchase of linen so as to buy the correct size, type and amount. Here are a few suggestions.

Shopping for sheets need not be dull. Eye-catching colors and interesting designs capture attention, but durability, easy care, and comfort are basic. No-iron finishes are available and should be indicated on the label.

Consider:

How much money you want to spend--

What you like--

Who will use the sheet--

Where it will be used--

How it will be laundered--

Start with a measuring tape before you shop. Size is determined by the thickness of the mattress as well as the length and width of the bed. A sheet which is too small will not stay tucked in, and one which is too wide will wear out from the friction under the mattress.

The following factors determine length.

torn size	108"
top and bottom hems taken	-5"
length of sheet after hemming	103"
sheets shrink about 6% in length	-5"
actual length after laundering	98"

Fitted sheets are available in both top and bottom sheet styles. Those designed as top sheets have corners fitted at only one end.

In order to buy the right size fitted sheet it is important to know the exact size of the mattress. Fitted sheets are available for standard dimension mattresses, both inner-spring and foam rubber.

Any pulling or tugging may cause your fitted sheet to rip. Put them on with care and ease. It's important not to strain the seams.

Examine sheets before you buy for the following points: look for a close, firm, and even weave. A good sheet has strong, tape-like selvages with no loose, untidy threads. Hems should be straight and neatly sewn with small even stitches.

Continued Page 4

Convenience Center Slated For Construction



ARCHITECTURAL DRAWING OF PEMBROKE PARK SHOPS

Pembroke North Associates are pleased to announce the construction

COMPLETE OPTICAL SERVICE **TELEPHONE 497-1724**

DR. DONALD J. STILES
OPTOMETRIST

5-B PEMBROKE MALL SHOPPING CENTER
VIRGINIA BEACH, VA. 23462

of Pembroke Park Shops, a brand new neighborhood convenience center. Located at the intersection of Hisdale Street and Independence Boulevard, the center will feature 10,000 feet of space incorporated into a one story building.

Completion date for Pembroke Park Shops is scheduled for late spring of 1970.

This new shopping area still has available space for neighborhood stores such as dry cleaners, barber shops, laundromats and such.

The attractive, modern architecture was designed by Dudley, Morrisette, Cederquist and Associates. Larasan Realty Corp. is the managing and leasing agent.

VIRGIL J. GRIMES
MUSICAL INSTRUCTION BY APPOINTMENT

SPANISH GUITAR • HAWAIIAN GUITAR • BASS GUITAR
BARITONE UKULELE • MANDOLIN
TENOR & 5 STRING BANJO

4475 HIDDINGS DRIVE
PEMBROKE MEADOWS
VIRGINIA BEACH VA 23455

TEL. 499-1420

Jayen Tile Co., Inc.

CARPETING
FLOOR COVERINGS
SANDING & FINISHING
ARMSTRONG - AMTICO
CUSTOM WINDOW SHADES

CERAMIC WALL TILES
LINOLEUM & TILES
VENETIAN BLINDS
HARDWOODS
PARQUET

2722 Colley Avenue
NORFOLK, VA.

627-0238

HAVING A HEATING PROBLEM?

IF YOU ARE DISSATISFIED WITH YOUR PRESENT HEATING SYSTEM AND WOULD LIKE A SURVEY FROM TIDEWATER'S FURMOST ELECTRIC HEATING CONTRACTOR, CALL SMITH & KEENE ELECTRICAL SERVICE FOR A FREE APPRAISAL

SMITH & KEENE
Electrical Service
340-4646

DISTRIBUTORS OF WESTINGHOUSE BUILT-IN APPLIANCES

FETT ROOFING & SHEET METAL CO., INC.

Re-roofing Is Our Largest Line

"Large Or Small, We Roof Them All"

RESIDENTIAL - COMMERCIAL - INDUSTRIAL - TRACT BUILDING

RADIO DISPATCHED TRUCKS

FREE ESTIMATES - FHA TERMS AVAILABLE
5775 POPLAR HALL DRIVE **420-5918**

TERRY TOPICS

Published the first Wednesday each month by:

TERRY CORP. of Virginia
Mailed free to Terry-built homes in Aragona Village, Pembroke Manor, Pembroke Meadows, Brookwood and Malibu subdivisions of Virginia Beach and Dunedin in Chesapeake.

Address all news items and advertising matters to:
TERRY TOPICS
4509 White Chapel Drive
Virginia Beach, Va. 23455

Mrs. Dorothy Simmons

SEAMSTRESS
APPOINTMENT ONLY

4408 PUTNAM CIRCLE
(PEMBROKE MANOR)
VIRGINIA BEACH, VIRGINIA

PHONE
499-2611

OLD DONATION SHELL
1068 Independence Blvd.

ELECTRONIC TUNE-UP ON SUN EQUIPMENT
ALL TYPES OF MECHANICAL REPAIRS
SPIN BALANCING

Free Pickup and Delivery
Phone 464-9053
464-3230

Pembroke Manor Garden Club Conducts Membership Drive

The Pembroke Manor Garden Club is currently conducting a membership drive. Dues for the club are half-price. All ladies in the area are invited to attend their regular monthly meetings the second Thursday of each month, at 8:00 p.m. at the Pembroke Manor United Church of Christ (across from the Manor House).

At the December meeting, Mrs. Cary Waddill spoke on "Christmas

Decorations" Members were fascinated as she demonstrated wreath-making in a beautiful but easy way.

Christmas and other arrangements were judged by the Lake Shores Garden Club and blue ribbons went to Jane Suggs, Mary Lou White and Joyce Gaus.

As a special Christmas treat the husbands made flower arrangements and they were judged also! Top winner was Charlie Meads, who, for the second year in a row, received some "Christmas Spirits" as a prize.

Members once again presented a cash donation to the Special Girl Scout Troop for a Christmas party and sent house plants to patients in the Lafayette Villa Nursing Home for Christmas.

On January 8 at 8:00 p.m. Diane Meads was guest speaker and had as her topic "Dried Plant Materials".

Diane showed a dried arrangement made in Mr. Meads empty "Spirits" bottle!

All ladies in the area are welcome to attend future meetings and join in the fun.

* * * * *

The old believe everything: the middle-aged suspect everything: the young know everything. Oscar Wilde.



BAYSIDE PURE
1101 Independence Blvd.
MINOR REPAIRS
SPECIAL PRICE ON SIMONIZE JOBS
Phone 464-4921

Terry Corp. Enters New Field

Terry Corp. of Virginia has announced its entry into the building of convalescent centers covering a region from Maryland to Georgia. Terry Corp. will select the sites, construct the facilities and arrange for community financial subscription and ownership.

Regency Manors International Inc., a Richmond based firm working in association with Terry Corp., will supervise architectural and equipment needs, secure necessary staff and assume management of the completed centers.

Three centers are slated to be built in the Tidewater area; the first to be constructed in the Pembroke complex. Located at the corner of Witchduck Road and Cathedral Drive, the anticipated completion date is late 1970. Mr. Donald Stone of Pittsburgh has been selected as the architect for the centers.

Pembroke Convalescent Facility will be a one story building with a simulated slate roof. One hundred and twenty beds will be available. The centers will offer nursing home accommodations, and extended care accommodations. This is a Medicare approved operation.

The Terry Corp., of Virginia known for its development and construction of residential and commercial phases of the Pembroke complex now marks a new field of endeavor with its latest venture. Owners of the new endeavor are Pembroke Convalescent Facilities, Inc.

WEDDING SPECIALIST
Photography by
J. R. HYSONG
497-0223

Rug Shops of
Maurice Unger
Your Carpet Dealer Since 1946
120 West 21st Street, Norfolk
4576-8 Pembroke Mall,
Va. Beach
5910 High Street, West,
Portsmouth

SOUTHERN TILE CONTRACTING CO.


CERAMIC FLOORS and WALL TILE

KITCHEN BACKSPLASH

Add MORE TILE To Your Bath

QUARRY and SLATE PORCHES

Call For Free Estimate Phone 497-8111



PORTA ALUMINUM, THE LARGEST SUPPLIER OF WINDOWS TO BUILDERS IN TIDEWATER, NOW OFFERS OUR PRODUCTS DIRECTLY TO YOU THE HOMEOWNER. OUR STORM WINDOWS ARE CUSTOM DESIGNED FOR USE OVER THE WINDOWS IN YOUR HOME AT SUBSTANTIAL SAVINGS. FREE ESTIMATES WITH A COPY OF THIS AD. NO OBLIGATION TO BUY.

WINDOWS - STORM WINDOWS - SCREENS

SCREEN REPAIR. - GLASS (Reglazing)

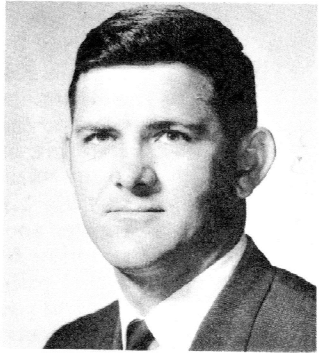
PATIO GLASS SLIDING DOORS - PATIO SCREENS

TUB & SHOWER ENCLOSURES
(FHA & VA Approved)

Your ONE Stop Aluminum Supplier

5604 REDSTONE ROAD (Davis Corner)
VIRGINIA BEACH, VA. 23462
Phone 499-2383

PEMBROKE NOTES



FREDDIE GUINN

Freddie the friendly agent asks... Are you getting your money's worth out of your present insurance man? Ask yourself...How many times you've called his office and could not reach him for service? How long has it been since he stopped by to see you without trying to sell you? When was the last time he bothered to check your rates on car and home just to see if you're getting the best rates?

You accomplish all these things by calling 499-0535 and getting personal service for all your insurance needs from a pro. As a bonus you'll get the lowest rates possible.

Turn over a new leaf and start 1970 right by calling 499-0535 and be assured that you are insured.



CAPT. C. C. TAYLOR

Pembroke Realty and Insurance Agency, Inc. has appointed Capt. C.C. Taylor, U.S.M.C. Ret., to head its Property Management Department. He will be responsible for the various residential commercial, and apartment complexes the firm maintains for various investors in the Tidewater area. The expanded department offers an extensive program for the investor or homeowner who wants the security professional management. If you are interested in retaining your equity investment in your home, let C.C. Taylor explain the many benefits of the Pembroke system.

Pembroke Realty
and
Insurance Agency, Inc.

633-A Independence Boulevard
Virginia Beach, Virginia 23462

Cont'd from Page 2

Are you bothered by the percale vs. muslin question? Here are a few facts. Percale sheets are woven of fine quality, long staple cotton, are light in weight, and give easily with bending and flexing in use.

Heavy weight muslin sheets are made of thick, short stapled courser yarn, are of greater tensile strength, and may feel strong and sturdy. Both percale and muslin come in different weights.

Pillowcases are made of the same material as sheets and are subject to the same tests of quality. Measure the width of the pillow, double this figure and add two inches for an accurate fit. As a rule you will need 3 or 4 pillowcases per pillow, especially if you wish to use a fresh case in between your complete bed change.

A good rule for the number of sheets to have is six for each bed; two in use, 2 in the laundry, and 2 in the linen closet. For longer wear, rotate them by putting freshly laundered sheets at the bottom of the pile in the linen closet.



TERRY TOPICS
4509 White Chapel Drive
Virginia Beach, Va. 23455

BULK RATE
U.S. POSTAGE
PAID
PERMIT NO. 14
VIRGINIA BEACH, VA.

The Garden Spot

By Diane Meads

Hi, Y'all! Hope you had a nice holiday. Were you lucky enough to receive a beautiful Poinsetta for Christmas? Maybe I can help you keep it alive. Of course, it won't live forever, but try this:

The Poinsetta is easily damaged by chilling. So keep it in a warm, draft-free spot, away from heat registers. (This is a general rule for all house plants.)

After colorful bracts have fallen off, you may want to experiment with holding it over for another season of bloom. If so, shift the plant to a cool location (near your garage window, perhaps) and water only occasionally.

When warm weather comes, cut stems back to no more than 8 inches,

Set it out in the garden, in a sunny location. Don't forget to bring it inside well before frost hits.

Now is the ideal time to make garden repairs. On mild days why not fix that broken rose trellis? Now's a good time also to clean, oil and sharpen your garden tools, also have your lawn mower cleaned and sharpened. This month and next, you can begin shaping non-blooming trees by light pruning.

When the cold winter days get extra long and drab, why not fill your yard with birds and brighten your day? Just throw out some bread crumbs and wild bird seed, then watch! Great fun for the little ones, too.

Get ready to plant trees beginning next month!

See you then!

USO is for someone you know,

Please give.



USO gets no government funds. It depends entirely on your gifts to the United Fund, Community Chest or local USO campaign.

Our servicemen give more.

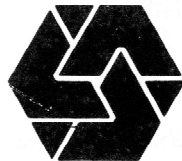
a long way from home.

Donated by a Friend In the Public Interest



A note to remind you of our Free Checking Account.

Sing a tune of savings! Just keep a \$150 balance in your checking account and your account is free. If you're a senior citizen, there's no minimum balance. How's that for keeping down the cost of keeping up with your bills? And if you think our checking accounts are great, you should see what we have for you in savings accounts and other services.



The First Colonial Bank

Virginia Beach's Hometown Bank

Malibu Towers and Pembroke Mall/Phone 340-0020