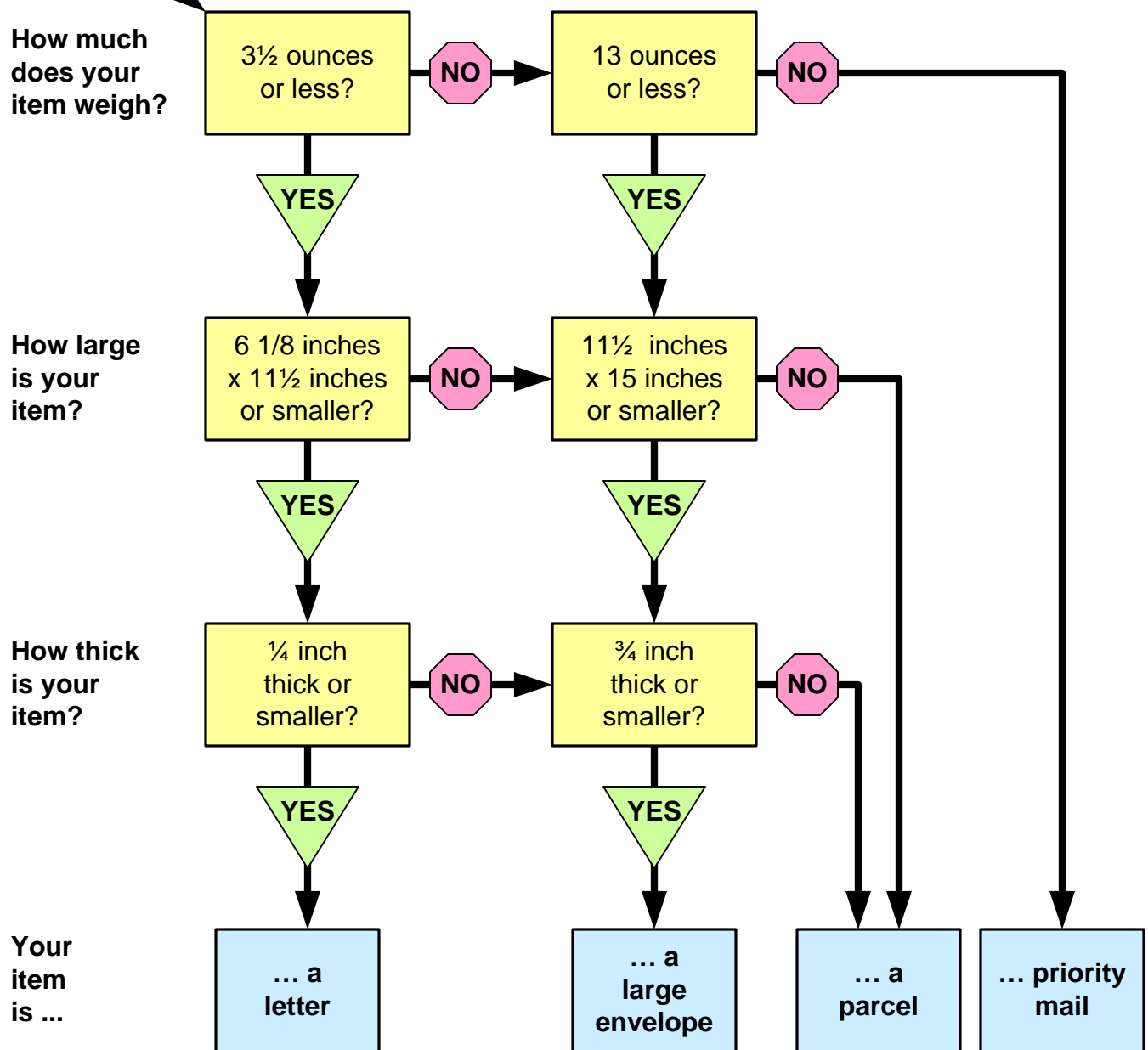


UNITED STATES POSTAL SERVICE DOMESTIC MAIL RATES

Prices effective 21 JANUARY 2024



First Class rate ...

1 oz	\$0.68
2 oz	0.92 (0.68 + 0.24)
3 oz	1.16 (0.68 + 2x 0.24)
3.5 oz	1.40 (0.68 + 3x 0.24)

Post Card... \$0.53

1 oz	\$1.39
2 oz	1.63
3 oz	1.87
4 oz	2.11
5 oz	2.35
6 oz	2.59
7 oz	2.83
8 oz	3.07
9 oz	3.31
10 oz	3.55
11 oz	3.79
12 oz	4.03
13 oz	4.27

Rate determined by weight and zone

See USPS Notice 123 Rate Table for details

\$9.25 (1 lb) Minimum

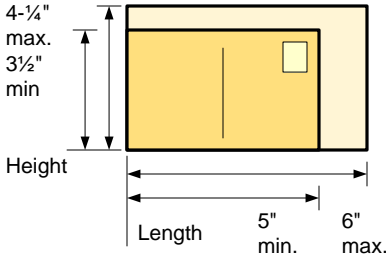
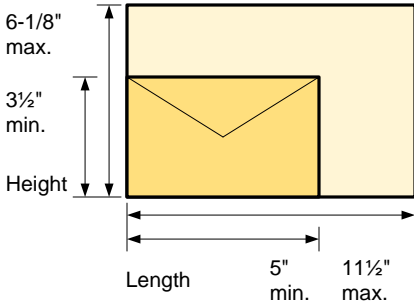
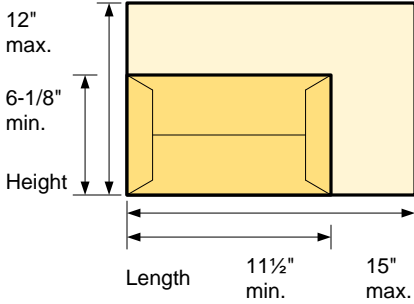
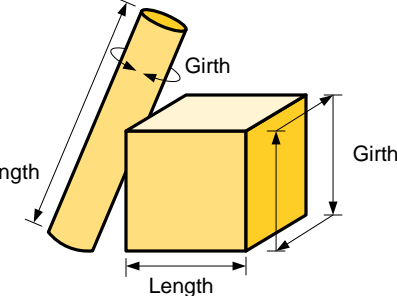
See USPS Notice 123 Rate Table for details



UNITED STATES POSTAL SERVICE

First-Class Mail Allowed Sizes & Shapes

Prices effective 21 JANUARY 2024

SHAPE	SIZE		PRICE		
Postcards - Retail 	minimum	maximum	Price		
	length	5 inches	6 inches	\$0.53	
	height	3½ inches	4-¼ inches		
	thickness	0.007 inch	0.016 inch		
Letters 	minimum	maximum	Weight Not Over (oz.)	Price	
	length	5 inches	11½ inches	1	\$0.68
	height	3½ inches	6-1/8 inches	2	\$0.92
	thickness	0.007 inch	¼ inch	3	\$1.16
				3.5	\$1.40
Letters that meet one or more of the nonmachinable characteristics in DMM 101.1.2 are also subject to the \$0.44 nonmachinable surcharge.					
Large Envelopes (Flats) 	minimum*	maximum	Weight Not Over (oz.)	Price	
	length	11½ inches	15 inches	1	\$1.39
	height	6-1/8 inches	12 inches	2	1.63
	thickness	¼ inch	¾ inch	3	1.87
				4	2.11
				5	2.35
				6	2.59
				7	283
				8	3.07
				9	3.31
				10	3.55
				11	3.79
				12	4.03
				13	4.27
* Flats exceed at least one of these dimensions. Pieces that are rigid, nonrectangular, or not uniformly thick pay parcel prices.					
Parcels 	length + girth		Rate determined by weight and zone		
	length + girth combined cannot exceed 108 inches (USPS Ground Advantage - Retail cannot exceed 130 inches)		See USPS Notice 123 Rate Table for details		
	length	the longest side of the package			
	girth	measurement around the thickest part (perpendicular to the length)			